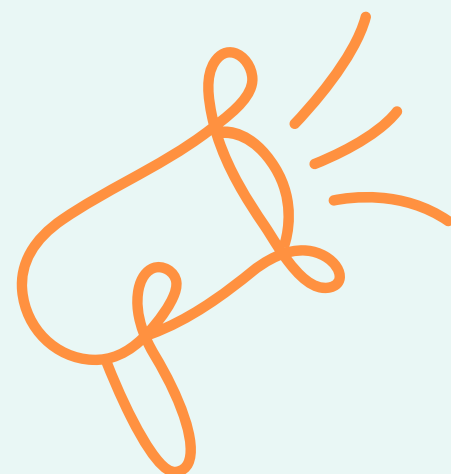




# DIGITAL LITERACY FOR CHILDREN



Lizu Community Network

What happens online can  
affect your safety, feelings,  
and future.



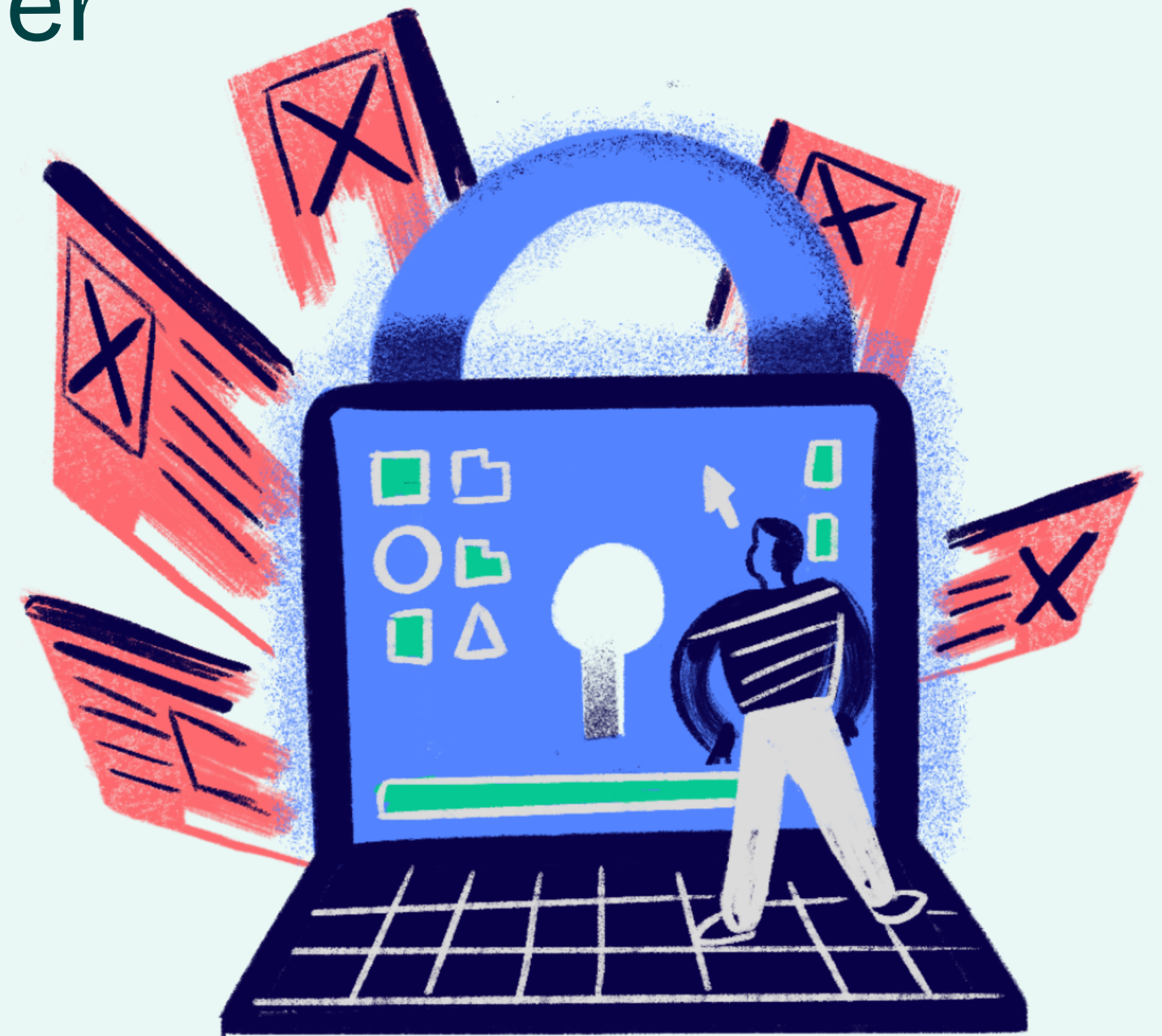
Lizu Community Network



- People online are real people – not all are kind
- What you post can stay forever
- You can say no online



Lizu Community Network







# WHAT YOU SHOULD DO!

- Don't share your name, school, photos, or location
- Talk to a trusted adult if something feels wrong
- Block and report bullying or strange messages







Lizu Community Network

**Children deserve  
safe, age-  
appropriate digital  
spaces.**

